

STRAIGHT FARMHOUSE CRIER

VOL. 7, No. 1

SUMMER, 2010

EDITORS: CAROL BIRD, SUE BIRD

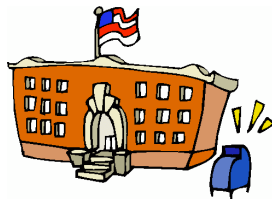


Brick Paver Walkway Update

Our brick paver walkway is finally finished, beautifully designed by Michigan Pete's Landscaping, owned by Pete Dryovage of 29911 Bock in Garden City. Pete graciously let our member, Chuck Guisgand, borrow the tool used to remove blank bricks easily from the walkway for engraving. We thank Pete for his most generous act of kindness, indeed. Chuck was then able to make an exact replica of this tool and use it to remove a blank brick and then replace the engraved brick ordered by our customers. No more waiting until Pete has time away from his business to install the engraved brick!! Chuck's talent and skill as a tool and die maker, learned in his youth at the Henry Ford Trade School in Dearborn, MI, are undeniably awesome in our opinion! Thank you, Chuck!!

New Post Office

Designation



A reception following the dedication and renaming of the Garden City Post Office was held at the Straight Farm House on May 14, 2010. The National Association of Postmasters of the United States had urged the U.S. House of Representatives to consider H.R. 2215 which asked for our Garden City Post Office to be designated the "John J. Shivnen Post Office Building" in light of his 30 years as Postmaster. John, one of our members, was also honored for his lifetime commitment of community service. Mentioned in the Congressional Chronicle, too, was that John was responsible for creating the replica of the Post Office in our Lathers General Store in the Straight Farm House. We now have a booklet available which traces the history of postal service in Garden City from the 1830's to the present. You'll just have to visit us to get one!

New Audio Tour CD

Now available for our visitors is a CD narrated audio tour of historical places in Garden City. Jerry Marquette and son, Alan, "engineered" the making of this CD. The "inaugural" tour was enjoyed by the Michigan Society of the Questers Past Presidents who met in our Grande Parlour for lunch, touring the Museum and our new "Tool Time Exhibit", and then experiencing the audio tour. They declared their day a total success! Future visitors -- using the CD is free, but as always -- "donations are very much appreciated"!

Questers are collectors of antiques, collectibles, and history. Questers help to preserve and restore antiquities, buildings and historical sites. The Waterford Bend Questers of Northville have gifted the Friends with many fine antiques for the Farm House and have been tremendously supportive since we began this entire operation. Thank you, Questers!



A Tasty Fundraiser!

April 23, 2010 was indeed a "Cloud Nine" evening with member Beverly England demonstrating the making of meringues and their many possibilities for fillings beyond just desserts. It was a very tasty evening for all who attended this fundraiser! Bev had even created a swan out of meringue and used slivered almonds, which really looked like feathers. Now *that's* creative! Thank you, Beverly, and your daughter, Denise Zoccoli, who smoothly kept things moving from oven-to-Grande Parlour for you. (We did learn to be gentle when handling the finished products -- otherwise the Puff Pastry became the Pouf Pastry!)



Now On Exhibit



Our "Tool Time Display" done by Kim Marquette, aided by her most willing husband, Jerry, features both His and Hers tools from past decades.

All have been donated by members and creatively arranged by Kim on our main floor. This display will be on exhibit until August 8, 2010.

We're happy to report that students and teachers from two classes from Memorial Elementary School in Garden City plan to tour the "Tool Time Display" on June 16, 2010. The teachers were very pleased to be able to end their unit of study of life in this time period by touring our display. Just to refresh your memory of our Mission Statement: "The Friends mission is to ensure that future generations can learn about and understand the contributions of prior generations to the formation and growth of Garden City." We look forward to the students' visit and hope that more classes follow their lead!

Our Gorgeous Grounds

If you have driven past the Straight Farm House the past few years, you've *had* to notice how terrific the grounds look. This is due to the loving care of member Jim Doddie, who also keeps the property across Elmwood from us in pristine condition. Jim's contribution is most certainly a labor of love! He has been helped tremendously on more than one occasion by gas gift cards, donated by Jay, Abe, & Eddie Sabbaugh of the Ford & Inkster Auto Center. We hope these gentlemen understand just how appreciative we Friends are for their contributions to our success!



Plant it Again, Mark!

...and speaking of things botanical...your Chairman, Mark Hammar planted gorgeous petunias in our two planters at the entry door. Problem: the squirrels liked them, too -- so much so that they ate them!! Mark plans to find something else to plant that maybe the squirrels won't like.



It's Flea Market Time

Our grounds certainly look inviting for the coming Flea Market Saturdays beginning on June 12, 2010. The Flea Market is run jointly with the Maplewood Center and was very successful last summer. This year we will have crafters and artisans who prefer to sell their wares inside use the tables in the Grande Parlour. Most will set up their tables under tents from our property to Block Street on the second and third Saturdays of each month, June through September. For more information, call 793-1854.



Author, Author!

John W. Quinn, Garden City High School Alumnus, Class of 1980 visited the Farm House recently and brought 5 signed copies of a book he has written, "Someone Like Me". They are now for sale in our Lathers General Store. Thank You, John Quinn, for thinking of us -- and for the copy you gave to the Library, too.

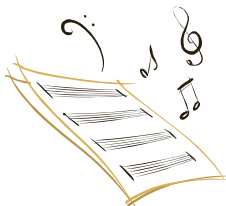
P.S. We now offer Michigan fruit and vegetable products for sale, also, in the Store. The pickled asparagus spears are quite popular --- and peppy!

Coming Events!!

The Petticoat Ladies of the Garden City Presbyterian Church will present their popular program, "The Titanic", on October 8, 2010 at 7:30 P.M. This is a repeat performance due to the many requests they and we have received.



The American Romanian Festival Quartet will be performing again for their third concert in the Grande Parlour! We'll be waiting for Marian Tanau and his fellow musicians from the Detroit Symphony Orchestra to set the date and time.



Two More Ghost Sightings!!

On one of medium Kristy Robinette's recent evening tours, a pair of elderly sisters both witnessed a man sitting at the "historical" switchboard (from Garden City High School c. 1950's-60's) panel upstairs.

During a recent investigation led by member Cindy Blake, a young girl claimed she saw a police officer with a head wound standing on the front lawn. He requested that she let his family know that he was OK.



Membership Report

We have 90 Friends members to date: 49 regular members and 41 who choose to use our Support Plan. If your membership renewal is ending in June, July, or August of 2010, you will find a renewal envelope or Support form enclosed in this newsletter. (Reminders to other members will also be enclosed.) Please don't hesitate to renew!! We can't continue operating the Farm House without your financial support. Our Grande Parlour continues to attract more rentals -- especially graduation parties at this time -- BUT -- the Parlour can't support us all by itself! Please do renew your membership when it expires. And THANK YOU to all our members who have already renewed!!

Rental Rate Change

It was necessary to change our Grande Parlour rental rates as follows:

Monday - Thursday: 2 hour minimum:
\$35.00 per hour.

Friday, Saturday, Sunday:
3 hours: \$150.00
5 hours: \$200.00
\$35.00 per additional hour.

All weekend rates include setup and cleanup times.